

ELDOWAS DIGEST

Achieving Safe Water Access for All

A Look at the Integrated and Inclusive Water Security Framework (IIWSF)

TABLE OF CONTENTS



3

INDUSTRY UPDATES

Safe Water Access

5

COMPANY UPDATES

Upcoming interruptions and maintenance works

7

CUSTOMER FAQ

Payment codes and services

8

CALL TO ACTION



ACHIEVING SAFE WATER ACCESS FOR ALL: A LOOK AT THE INTEGRATED AND INCLUSIVE WATER SECURITY FRAMEWORK (IIWSF)



Clean water is essential for life, yet millions of people around the world lack access to this basic human right. The United States Agency for International Development (USAID) is committed to helping communities achieve safe water security, and the Integrated and Inclusive Water Security Framework (IIWSF) is a key tool in this effort.

What is the IIWSF?

The IIWSF is a framework for collaborative, multi-stakeholder water security planning. It was developed by USAID and first implemented in the Philippines through its Safe Water Project. The framework builds on the Integrated Water Resources Management (IWRM) principles of social equity, economic efficiency, and environmental sustainability.

How Does the IIWSF Work?

The IIWSF helps communities to develop a holistic and integrated approach to water security by structuring threat analysis, participation, and objectives according to three key areas:

- **Service Provision:** This component focuses on ensuring that everyone in the community has access to a reliable and safe water supply. It considers factors such as water source development, treatment, and distribution systems.

- **Resource Management:** This component focuses on the sustainable management of water resources. It considers factors such as water quality protection, watershed management, and drought preparedness.
- **Governance:** This component focuses on the effective governance of water resources. It considers factors such as water rights, financing, and capacity building.

By taking all of these factors into account, the IIWSF can help communities to develop water security plans that are both effective and sustainable.



ELDOWAS' services demonstrate a strong commitment to several key aspects of safe water security outlined in the framework. Here's how:

1. Water Quality Monitoring:

- The Water Quality Assurance Section (WQAS) monitors all ELDOWAS water production processes, ensuring delivered water meets national drinking water quality standards through our accredited water testing lab. This aligns with the IIWSF's emphasis on providing safe drinking water.

2. Environmental Protection:

- ELDOWAS monitors wastewater treatment plant effluent to comply with national discharge standards. This commitment to environmental protection resonates with the IIWSF's focus on sustainable water resource management.

3. Pollution Control and Catchment Management:

- WQAS in partnership with our conservation department actively implements projects such as Eldoret Iten Water Fund focused on pollution control and catchment management, addressing potential threats to water sources. This proactive approach aligns with the IIWSF's emphasis on long-term water security planning.

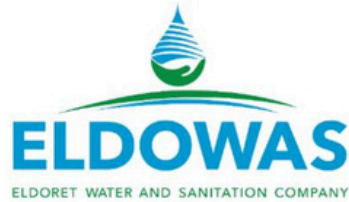
4. Public Awareness and Training:

- ELDOWAS offers training and public awareness programs on water sanitation, public health, and environmental management. This aligns with the IIWSF's goal of promoting stakeholder participation and responsible water stewardship.

5. Collaborative Research:

- ELDOWAS collaborates with universities, research institutions such as USAID Real water Assurance fund through Aquaya, and NGOs on water-related research. The collaborative research aligns with the framework's spirit of knowledge sharing and finding sustainable solutions.

COMPANY UPDATES



PUBLIC NOTICE

INTERRUPTION OF WATER SUPPLY FROM SOSIANI WATER TREATMENT PLANT.

This is to inform you that there will be a temporary interruption in the water supply from the Sosiani Treatment Plant. This interruption is scheduled for **Wednesday, 16th October, 2024** between **7:00 am to 7:00pm**. The interruption is to allow for routine maintenance works for the raw water pipeline to our Sosiani Water Treatment Plant.

The areas which will be affected include:

- Eldoret CBD, West Indies
- Lower Elgon View
- Moi Teaching and Referral Hospital
- Eldoret Hospital
- Langas
- Pioneer
- Kipkarren
- Yamumbi
- Kipkenyo
- Rivatex
- Fire Station
- Ken-Knit
- KCC
- Reale Hospital
- St Luke Hospital
- Boma Inn Hotel

During this period, the other water treatment plants will remain operational to ensure the continuity of water supply to unaffected areas.

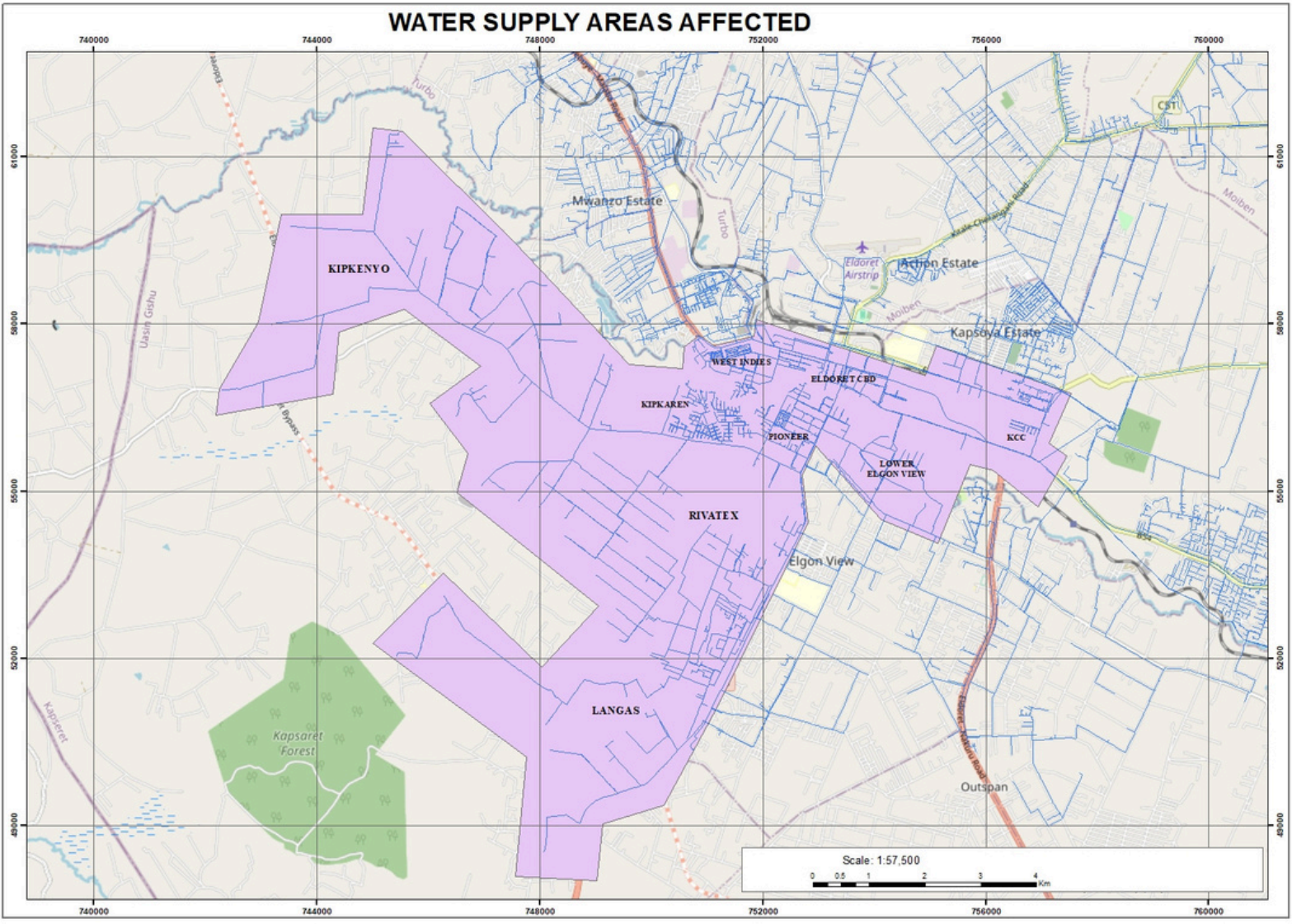
We apologize for any inconvenience this may cause and appreciate your understanding.

Fredrick Kosgei
Ag. MANAGING DIRECTOR
ELDORET WATER AND SANITATION CO. LTD

📍 Kambi Somali Road, behind Rift Valley Bottlers
☎ +254 724 255 538

📦 Box: 8418-30100, Eldoret, Kenya
🌐 www.eldowas.or.ke

WATER SUPPLY AREAS AFFECTED



CUSTOMER FAQ

FAQ

Why am I unable to get my account balance after sending a text message

Answer

1. Go to your phone Settings.
2. Select Apps.
3. Tap the More menu or 3-dot icon for more options and select Special Access.
4. Select Use Premium Text Message Services.
5. Tap on Messages and select Always Allow to always allow the use of Premium SMS message services.

STAY IN THE KNOW

Discover a world of information and possibilities! Visit our company website to explore a treasure trove of insights and services. Subscribe to our newsletter for the latest updates, offers and exclusive content.

 Visit Now: [our website](#)

 Subscribe to our [Newsletter](#) for Updates!

Stay Connected with Us!



[Eldoret Water and Sanitation Co. Ltd](#)



[@eldowasco](#)



[Eldoret Water and Sanitation Company \(ELDOWAS\)](#)



[Eldoret Water and Sanitation Company](#)

Discover a world of information and possibilities.

